

# Somerset®

The classic Somerset fan is just the thing for those seeking drama in their home decór.



Aged Bronze Somerset with 52" Custom Wood Washed Walnut Birch Blades and Integrated Light Kit

Model-Finish **ST52AG**  
 Blade-Finish **B552S-WWB**  
 Light-Finish **Integrated**

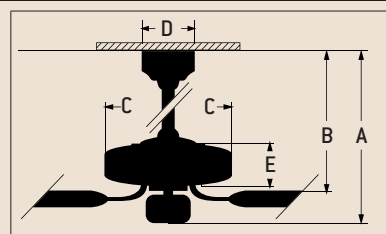
## Features

- Heavy-Duty, 3 Speed Reversible Motor
- 6" Downrod *(Included)*
- Limited Lifetime Warranty
- Blades Sold Separately
- Integrated Light Kit *(2-60W Candelabra Bulbs)*
- TCS Remote Control *(Included)*
- TCS Plus Wall Control Available *(Optional)*

## Specs

- Blade Sweep Opt. 44", 52", 54", 56"
- Number of Blades 5
- Blade Pitch 14°
- Motor Size (MM) 188 x 15
- AMPS (HI Speed) 0.7
- Watts (HI Speed) 71
- RPM (HI-MED-LOW) 210-120-78
- Shipping Wt. (lbs.) 27.34
- CU. FT. in Carton 2.84
- Airflow\* 6,480  
*(Cubic Feet Per Minute)*
- Electricity Use\* 71 Watts
- Airflow Efficiency\* 91  
*(Cubic Feet Per Minute Per Watt)*

## Ceiling Drop Dimensions



A: 6" DR - 15.5"      B: 6" DR - 10.625"  
 C: 12.375"          D: 6.25"  
 E: 4.0"  
 DR: Downrod

\*Compare: 36" to 48" ceiling fans have airflow efficiencies ranging from approximately 71 to 86 cubic feet per minute per watt at high speed.\*

\*Compare: 49" to 60" ceiling fans have airflow efficiencies ranging from approximately 51 to 176 cubic feet per minute per watt at high speed.\*

# Popular Combinations



Burnt Sienna Somerset with 52" Custom Wood Light Oak Blades and Integrated Light Kit

Model-Finish **ST52BU**  
 Blade-Finish **B552S-L05**  
 Light-Finish **Integrated**



Saddle Leather Somerset with 52" Custom Dark Oak Blades and Integrated Light Kit

Model-Finish **ST52SL**  
 Blade-Finish **B552S-D04**  
 Light-Finish **Integrated**

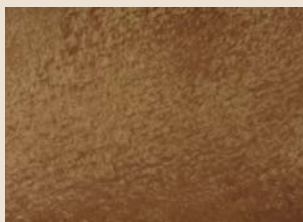
## Available Finishes



**AG**  
Aged Bronze



**BU**  
Burnt Sienna



**SL**  
Saddle Leather

## Blade Options

Type 1 Blades  
*(see page 188)*



Type 2 Blades  
*(see page 192)*



## Light Kit Options

Integrated Light Kit

## Remotes



TCS Remote Control  
*(Included)*



TCS-PLUS Wall Control  
*(Optional)*  
TCS-WALL