

Chaparral[®]

With a rustic Western air, the Chaparral distinguishes itself with a bigger than life design.



Aged Bronze Chaparral with 54" Premier Hand-Scraped Teak Blades and Light Kit

Model-Finish **CP52AG**
 Blade-Finish **B554P-TK7**
 Light-Finish **LK44-AG**

Features

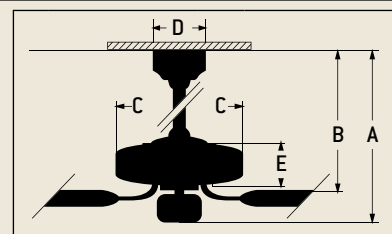
- Heavy-Duty, 3 Speed Reversible Motor
- 2" and 6" Downrods (Included)
- Limited Lifetime Warranty
- Blades Sold Separately
- Light Kit Adaptable (Optional)
- Both TCS Controls Available (Optional)
- Suitable for Damp Locations



Specs

- Blade Sweep Opt. 44", 52", 54", 56"
- Number of Blades 5
- Blade Pitch 14°
- Motor Size (MM) 188 x 15
- AMPS (HI Speed) 0.62
- Watts (HI Speed) 72
- RPM (HI-MED-LOW) 210-120-78
- Shipping Wt. (lbs.) 25.35
- CU. FT. in Carton 1.87
- Airflow* 6,360
(Cubic Feet Per Minute)
- Electricity Use* 72 Watts
- Airflow Efficiency* 88
(Cubic Feet Per Minute Per Watt)

Ceiling Drop Dimensions



A: 2" DR - 12.0" B: 2" DR - 7.375"
 A: 6" DR - 16.0" B: 6" DR - 11.375"
 C: 12.5" D: 6.75"

E: 5.5"
 DR: Downrod

*Compare: 36" to 48" ceiling fans have airflow efficiencies ranging from approximately 71 to 86 cubic feet per minute per watt at high speed.

*Compare: 49" to 60" ceiling fans have airflow efficiencies ranging from approximately 51 to 176 cubic feet per minute per watt at high speed.

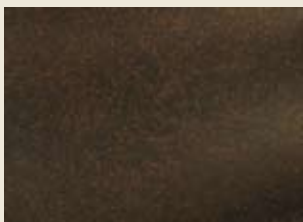
Popular Combinations



Aged Bronze Chaparral with 54" Premier Hand-Scraped Teak Blades

Model-Finish **CP52AG**
 Blade-Finish **B554P-TK7**
 Light-Finish **Not Shown**

Available Finishes



AG
Aged Bronze

Blade Options

Type 1 Blades
(see page 188)



Type 2 Blades
(see page 192)



Type 3 Blades
(see page 197)



Light Kit Options

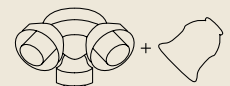
Bowl Light Kits
(see page 204)



Complete Light Kits
(see page 208)



Customize Your Own
(see pages 209/211)



Remotes



TCS Remote Control
(Optional)
CP-TCS-(Finish)



TCS-PLUS Wall Control
(Optional)
CP-TCS-PLUS-(Finish)